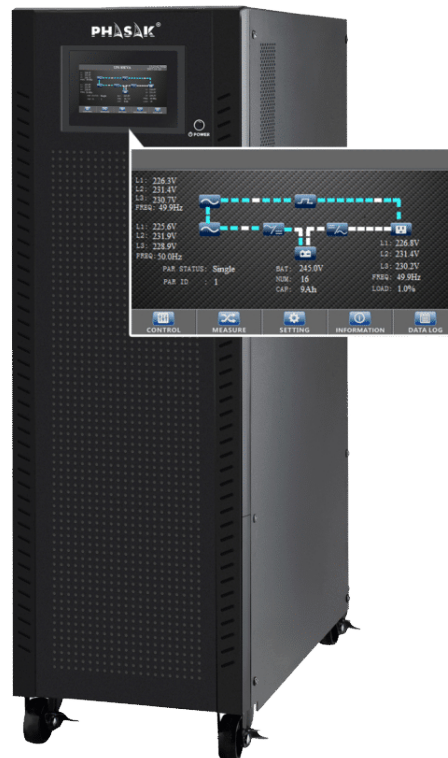


PHASAK[®]

Serie Tempus 3P/3P



PH 9273 - PH 9293

3:3 - 3:1

Manual Cambio Trifásico - Monofásico
Troca Manual Trifásica - Monofásica
Manual Change Three-phase - Single-phase

Pag 2
Pag 5
Pag 8

13. Cambiar de modelo 3:3 a 3:1

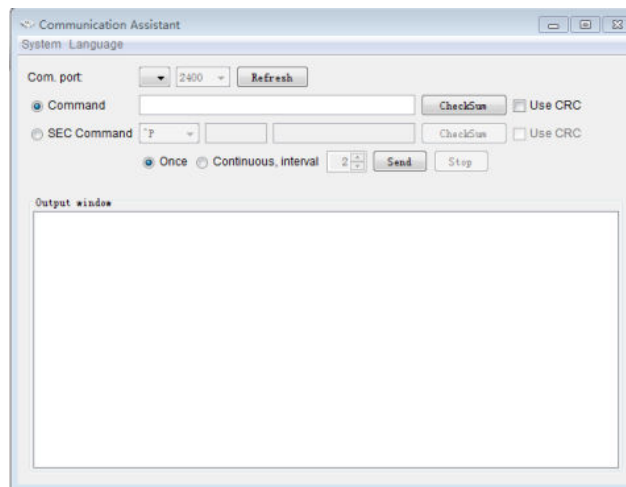
A. Primer método

Esta operación solo debe ser realizada por personal de mantenimiento o técnicos calificados.

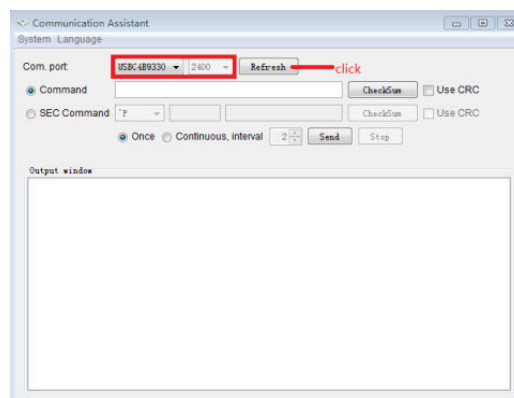


1. Abra el software de comunicación

Aparecerá la siguiente interfaz:



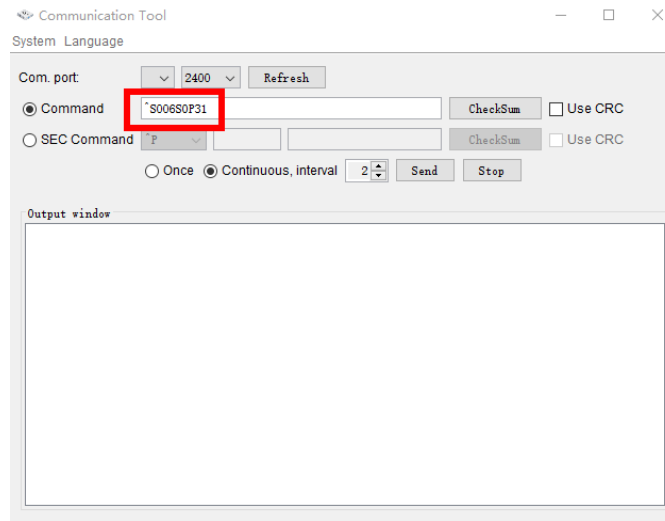
- Al configurar el parámetro de la batería, confirme que el estado del SAI sea el modo de derivación o el modo de espera. Haga clic en "Actualizar", "USB ..." y "2400" aparecerá en la ubicación adecuada..



- Ingrese el comando “^ S006SOP31” para configurar el UPS en el modelo 3-1, el UPS devolverá el código “^ D006ACK” al aceptar. Si desea

configurar el modelo 3-3, el comando es “^ S006SOP33”.

Nota: este parámetro no tiene efecto de inmediato. La configuración se guardará cuando el SAI se apague normalmente y se conecte a las baterías.



- Después de que el UPS se apaga normalmente, los terminales de salida deben estar interconectados.

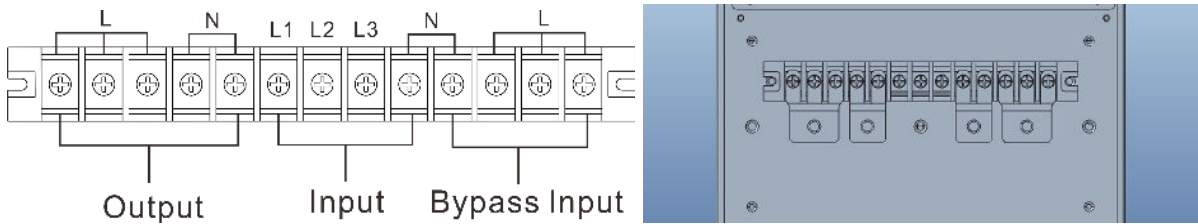
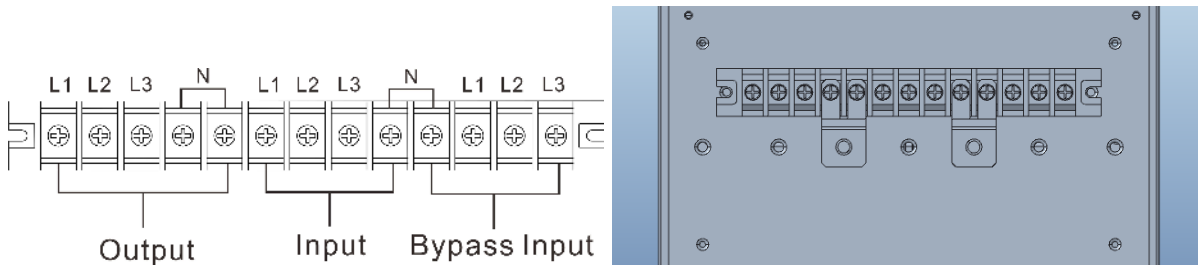


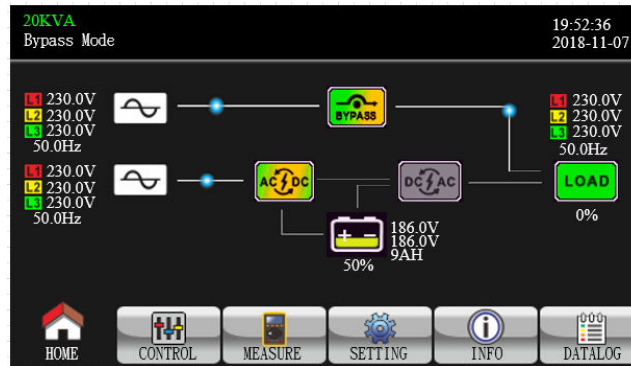
Diagrama de cableado de interconexión de lámina de cobre 3-1



33 Diagrama esquemático de la conexión de la hoja de cobre de cortocircuito.

B. Segundo método

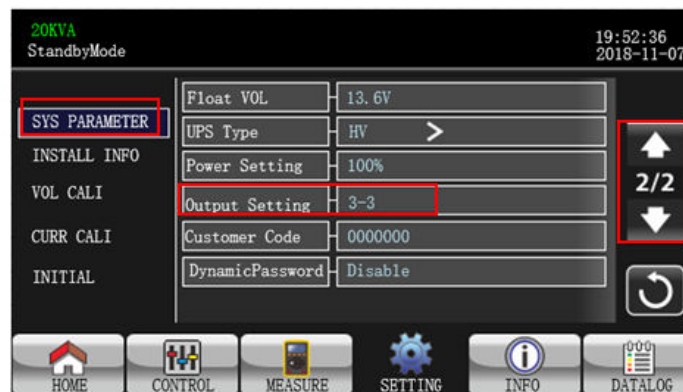
- Presione "SETTING" en el modo bypass o en el modo de espera



2. Introduzca la contraseña



3. Presione "SYS PARAMETER", vaya a la página 2 y seleccione "Output Settings", cambie "3-3" a "3-1"



NOTA: La configuración se guardará cuando el UPS se apague normalmente y se conecte a las baterías.

3.5. Funcionamiento en paralelo

1. Arranque inicial del sistema en paralelo

Antes de comenzar, asegúrese de que todos los modelos de SAI sean del tipo paralelo y tengan la misma configuración. Es necesario un técnico especializado.

13. Mudar modelo 3-3 para modo 3-1

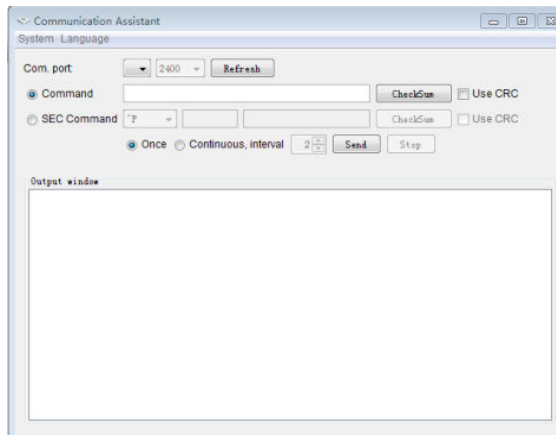
A. Primeiro método

Esta operação deverá ser levada a cabo apenas por pessoal de manutenção ou técnicos qualificados.

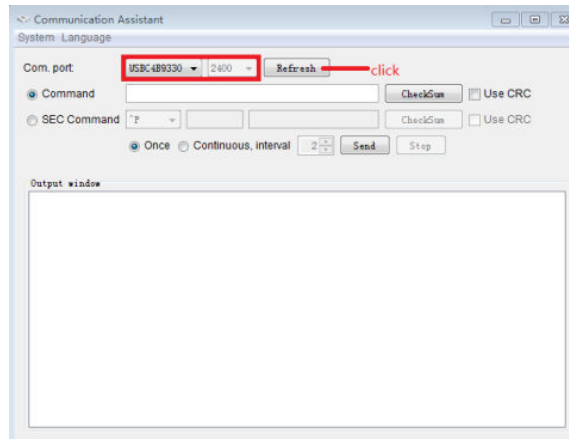
Abra o software de comunicação



Irá aparecer o seguinte interface.

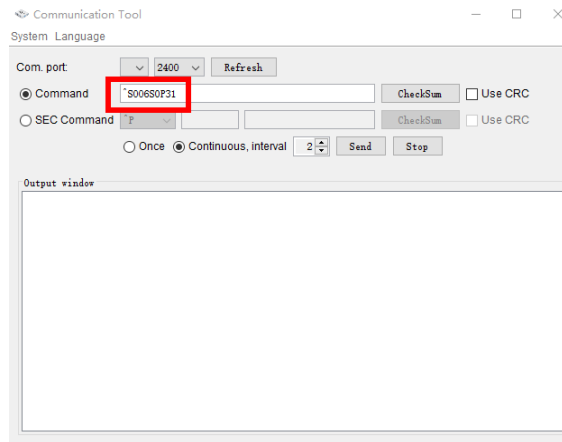


2. Ao definir os parâmetros das baterias, por favor confirme que o estado da UPS está em modo bypass ou modo standby.
3. Clique “Refresh”, “USB...” e “2400” irá aparecer no campo apropriado.

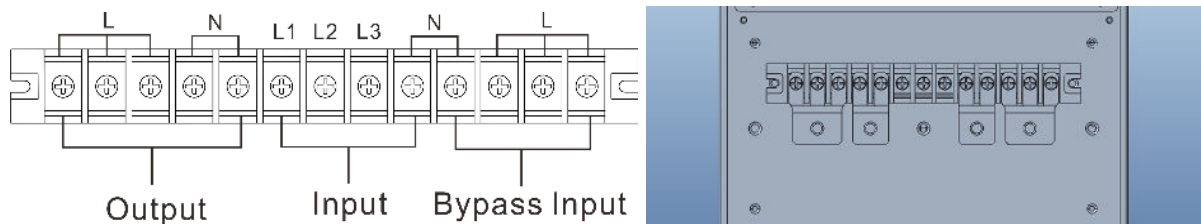


4. Introduza o comando “^S006SOP31” para definir a UPS para o modelo 3-1, a UPS irá devolver o código “^D006ACK” quando aceitar. Se pretender definir para o modelo 3-3 model, o comando é “^S006SOP33”.

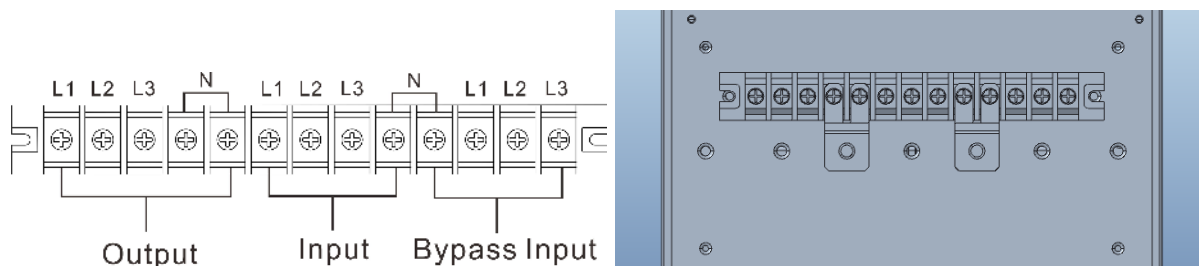
Nota: Este parâmetro não entra em efeito imediatamente. A definição será gravada quando a UPS encerrar normalmente e com ligação às baterias.



5. Após a UPS encerrar normalmente, os terminais de saída necessitam ser interligados.



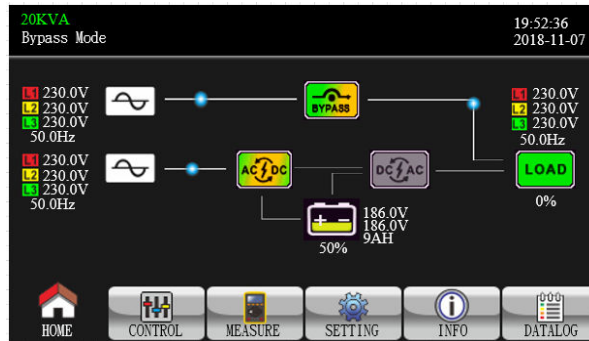
Esquema de ligações 3-1 da folha em cobre de interligação



Esquema de ligações 3-3 da folha em cobre de interligação

B. Segundo método

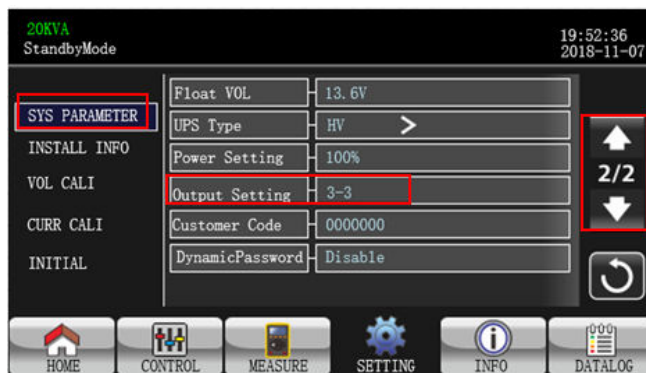
1) Pressione "SETTING" em modo bypass ou modo standby



2) Introduza a palavra chave



3) Pressione "SYS PARAMETER", aceda à página 2 e selecione "Output Settings", mude "3-3" a "3-1":



NOTA: A definição será gravada quando a UPS encerrar normalmente e com ligação às baterias.

13. 33 model set to 31 model

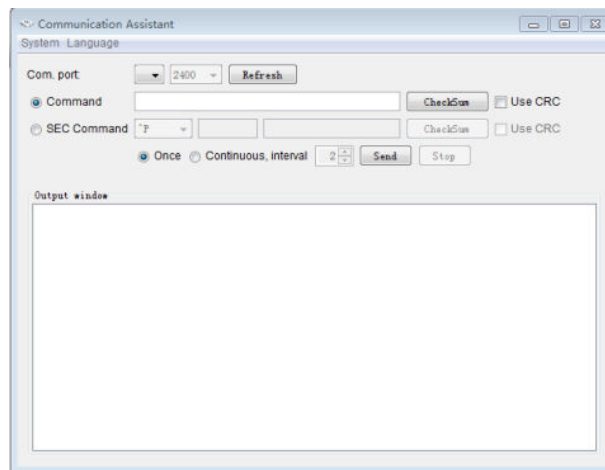
C. First method

This operation should only be performed by maintenance personnel or qualified technicians.

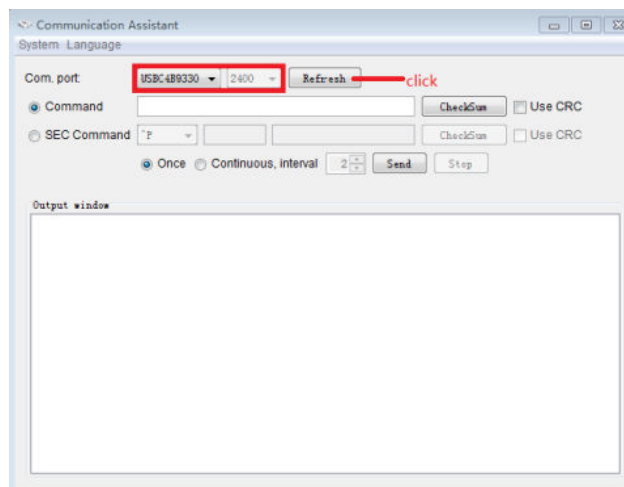


Open the communication software

The following interface will appear.

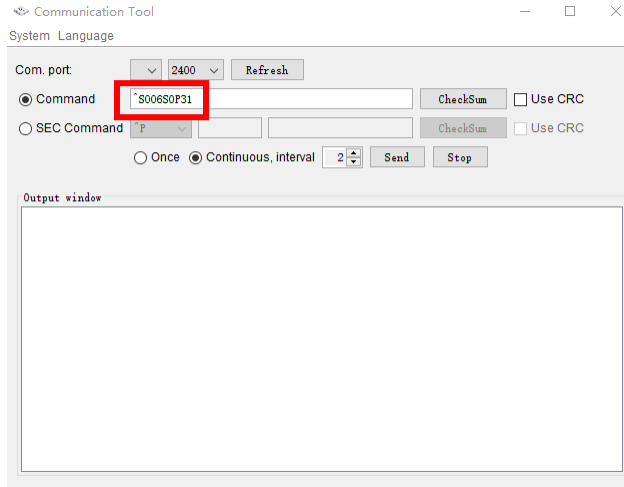


- When setting up the battery parameter, please confirm that the UPS state is bypass mode or standby mode.
Click "Refresh", "USB..." and "2400" will appear at the appropriate location.

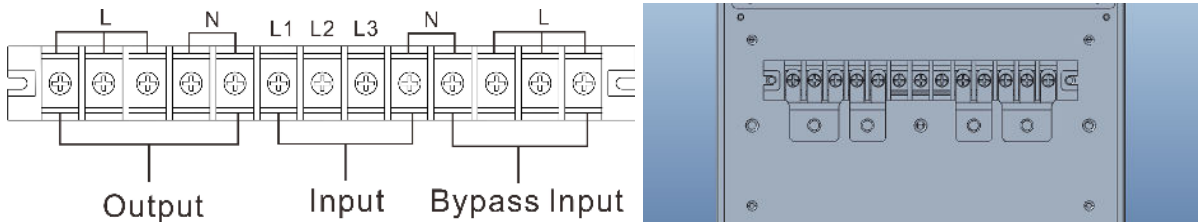


- Enter the command “^S006SOP31” to set the UPS to 31 model, UPS will return “^D006ACK” when it accepts. If you want to set the UPS to 33 model, the command is “^S006SOP33”.

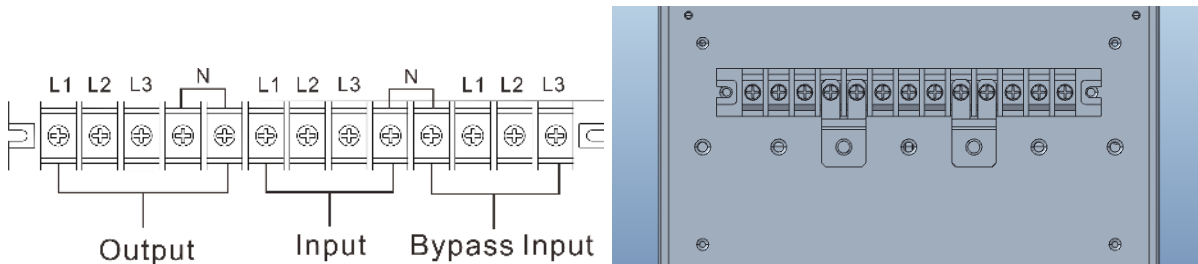
Note: this parameter setting is not effected immediately. The setting will be saved only when UPS shutdown normally and with battery connection.



- After the UPS is shut down normally, the output terminals need to be shorted.



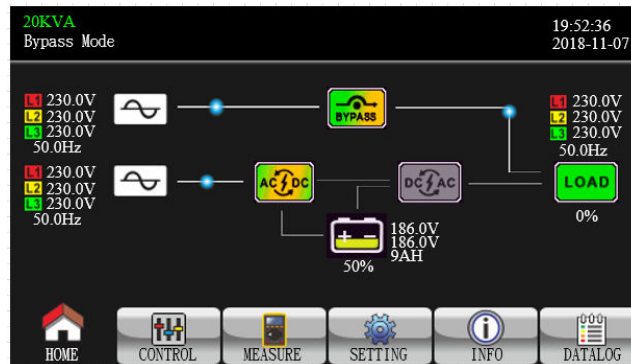
31 Schematic diagram of the connection of short circuit sheet copper



33 Schematic diagram of the connection of short circuit sheet copper

D. Second method

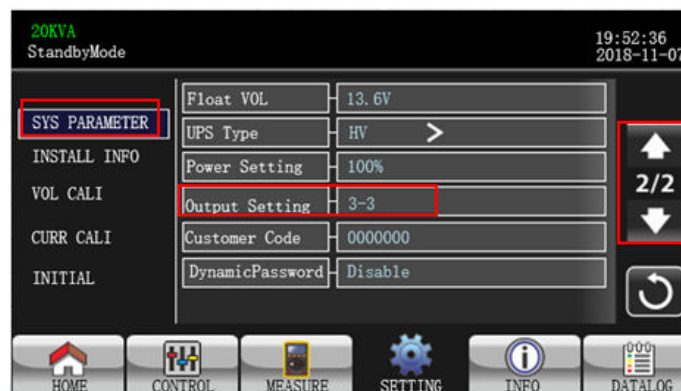
4. Press "SETTING" in bypass mode or standby mode



5. Enter password



6. Press "SYS PARAMETER" then go to page 2 and select "Output Settings", change "3-3" to "3-1":



NOTE: The parameter settings will be saved only when UPS shuts down normally with battery connection.